

N



- Agricultural Zones**  
A1 Agricultural 1 (S)
- Rural Residential Zones**  
RR1 Rural Residential 1 (S)  
RR2 Rural Residential 2 (S)  
RR3 Rural Residential 3 (S)
- Urban Residential Zones**  
RU1 Large Lot Housing (S) (H)  
RU2 Medium Lot Housing (S) (H) (HS)  
RU3 Small Lot Housing (HS)  
RU4 Low Density Cluster Housing  
RU5 Bareland Strata Housing  
RU6 Two Dwelling Housing  
RU6b Two Dwelling Housing w/Boarding & Lodging

- Urban Residential (multi-family) Zones**  
RM1 Four-Plex Housing  
RM2 Low Density Row Housing (H)  
RM3 Low Density Multiple Housing  
RM4 Transitional Low Density Housing  
RM5 Medium Density Multiple Housing  
RM6 High Rise Apartment Housing  
RM7 Mobile Home Park

- Commercial Zones**  
C1 Local Commercial  
C2 Neighbourhood Commercial (L,R)  
C3 Community Commercial (L,R)  
C4 Town Centre Commercial (L,R)  
C5 Transition Commercial  
C6 Regional Commercial (L,R)  
C7 Central Business Commercial (L,R)  
C8 Convention Hotel Commercial (L,R)  
C9 Tourist Commercial (L,R)  
C10 Service Commercial (L,R)

- Health District Zones**  
HD1 Kelowna General Hospital  
HD2 Hospital and Health Support Services

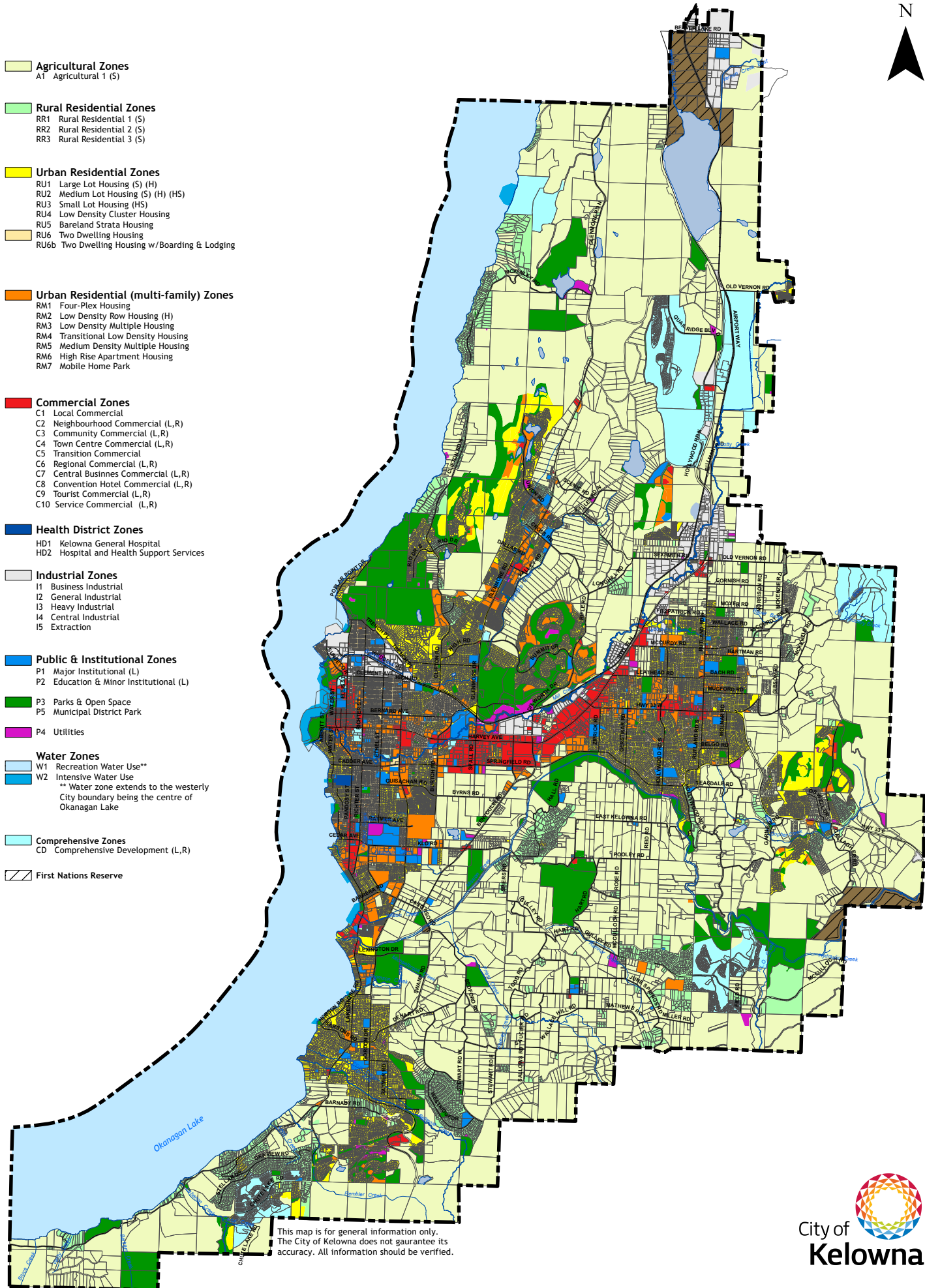
- Industrial Zones**  
I1 Business Industrial  
I2 General Industrial  
I3 Heavy Industrial  
I4 Central Industrial  
I5 Extraction

- Public & Institutional Zones**  
P1 Major Institutional (L)  
P2 Education & Minor Institutional (L)
- P3 Parks & Open Space**  
P5 Municipal District Park
- P4 Utilities**

- Water Zones**  
W1 Recreation Water Use\*\*  
W2 Intensive Water Use  
\*\* Water zone extends to the westerly City boundary being the centre of Okanagan Lake

- Comprehensive Zones**  
CD Comprehensive Development (L,R)

- First Nations Reserve**



This map is for general information only.  
The City of Kelowna does not guarantee its accuracy. All information should be verified.



# Generalized Current Zoning

