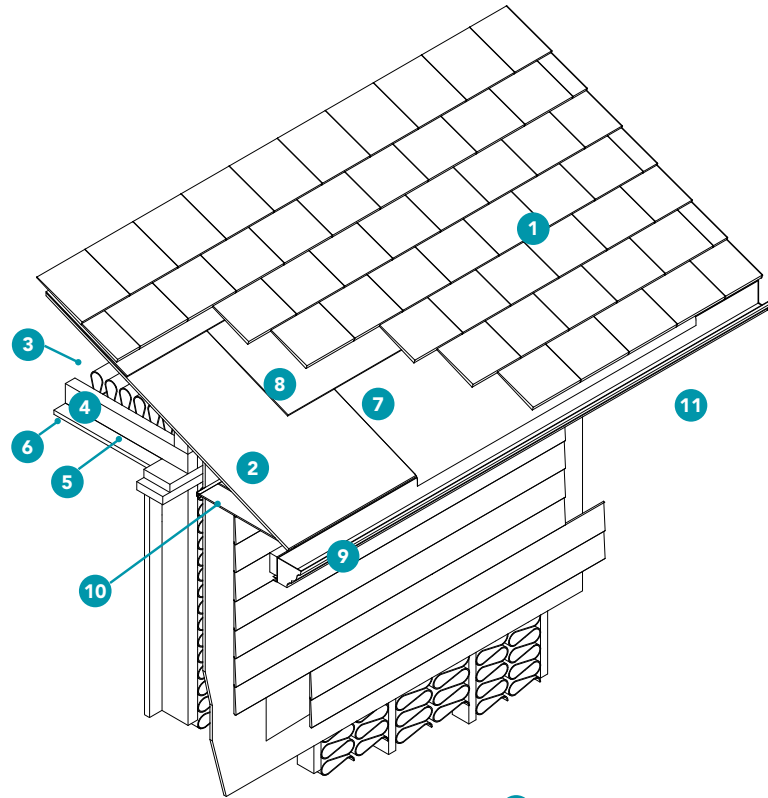
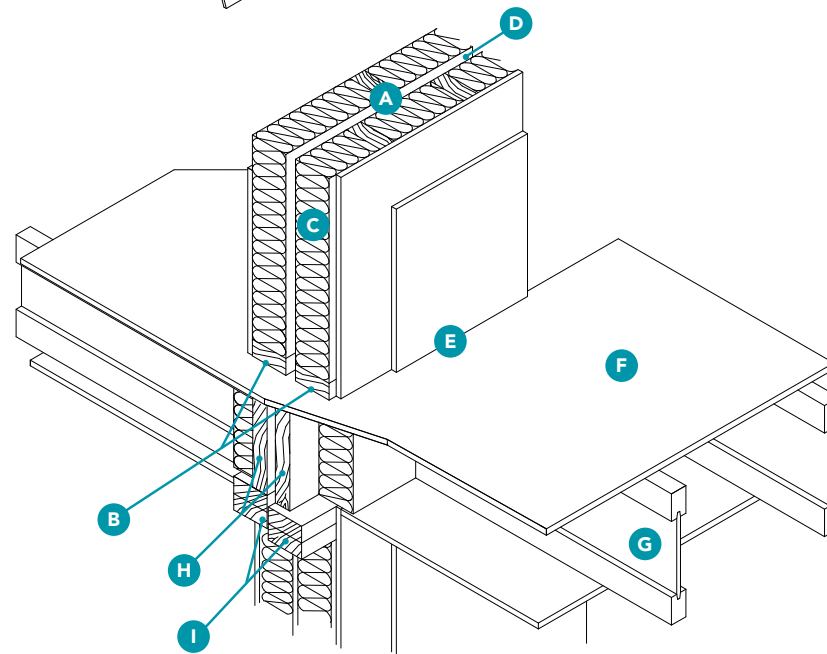


Construction Detail



Roof Detail

- 1 Fiberglass asphalt shingles with limited lifetime warranty
- 2 Quality roof sheathing
- 3 R-40 Fiberglass blown insulation
- 4 Engineered wood trusses
- 5 Six Mil polyethylene vapor barrier
- 6 One layer of 5/8" gypsum ceiling board
- 7 Eave protection extending 36" minimum up the roof
- 8 One layer of 15 lb asphalt saturated roofing felt. 30 lb in all valleys and eaves including 26 gauge metal in all valleys
- 9 Seamless aluminum gutter
- 10 Perforated aluminum soffit
- 11 Generous roof overage of 24" in most areas



Party Wall Assembly

- A One layer of 5/8" type 'X' drywall on one side with single layer of OSB (for shear walls only) and 2 layers of 5/8" type 'X' drywall on the other side as per Architectural assembly
- B Party wall assembly using two separate 2" x 4" wood stud walls
- C R-12 batt insulation
- D 1" air separation between all framed walls
- E Continuous bead of acoustic caulking under each wall plate
- F 5/8" tongue & groove floor sheathing screwed and glued to floor joists
- G Engineered floor joists
- H 1-1/4" fire-rated rim board between floors
- I Double 2" x 4" top plate of wood framed wall

brighton

Your Home in the Mission

In a continuing effort to meet the challenge of product improvement, we reserve the right to modify or change plans and specifications without notice. All dimensions and sizes are approximate. Refer to the disclosure statement for specific details. E.&O.E.



The quality homes at Brighton are built by Brighton - Mission Group Homes Limited Partnership

Our Mission: To build each home as if it were our own, and treat our homeowners like family.