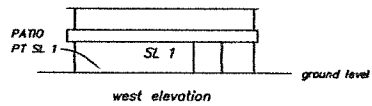
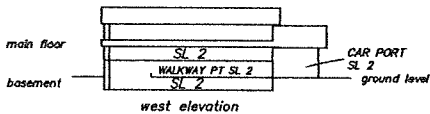
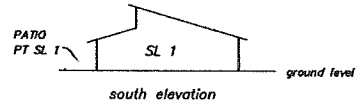
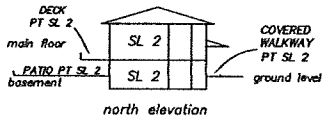
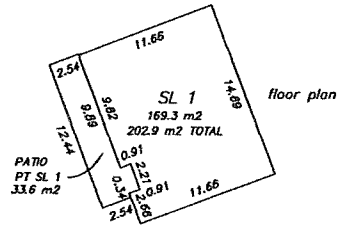
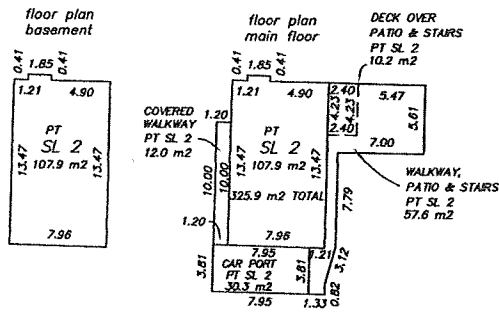
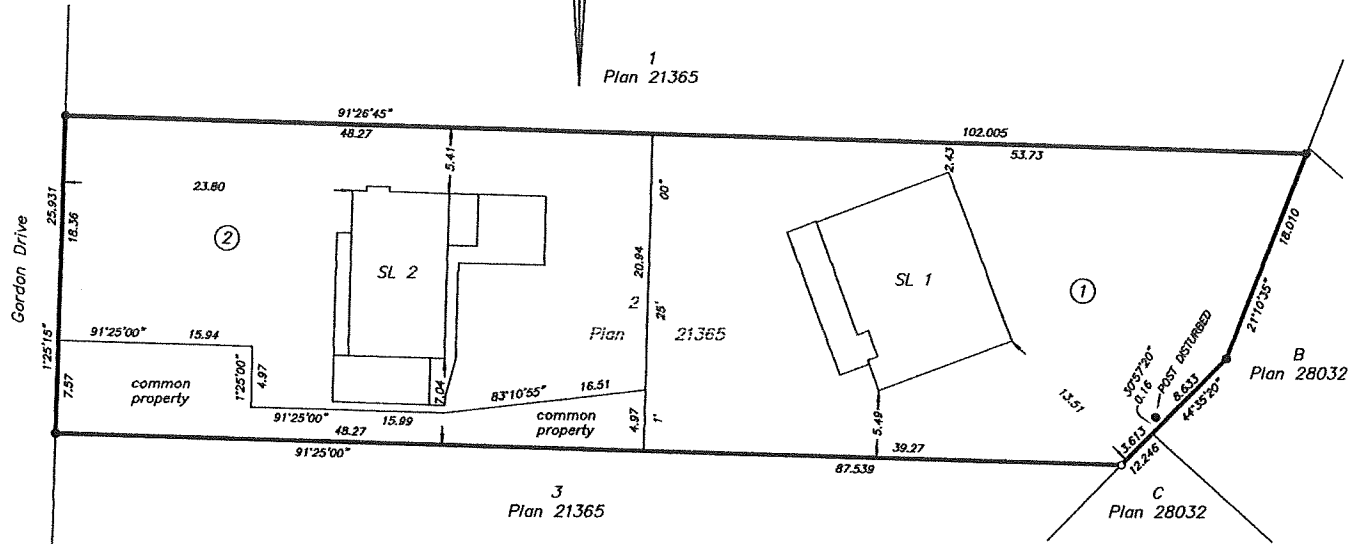
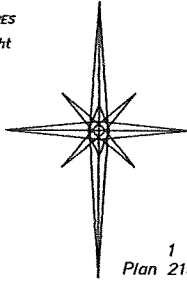


The intended size of this plan is 432 mm in width by 560 mm in height (C size) when plotted at a scale of 1:300.

N



- iron post found
- iron post set
- SL strata lot
- PT part
- C common property
- ① limited common property for strata lot circled.

Dimensions and area calculations of the Strata Lots are to the exterior finished surface of the buildings.

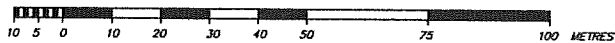
The field survey represented by this plan was completed on the 20th day of June, 2016.
 Douglas A. Goddard, BCLS 588.

**STRATA PLAN OF LOT 2 D.L. 358
O.D.Y.D. PLAN 21365**

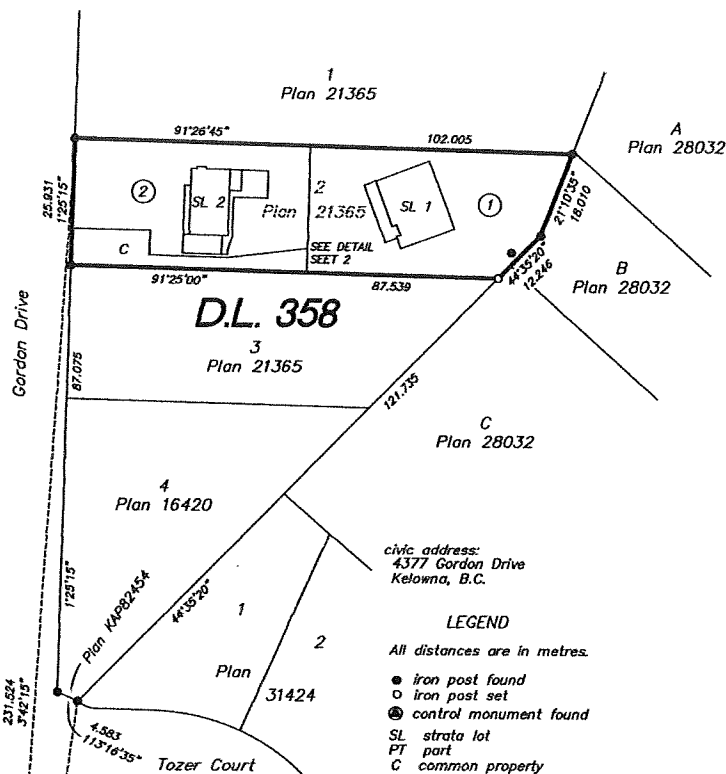
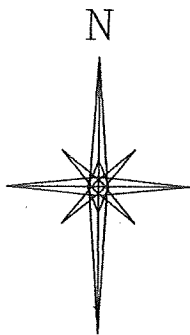
sheet 1 of 2 sheets

STRATA PLAN EPS3662

BCGS 82E.083



The intended size of this plan is 432 mm in width by 560 mm in height (C size) when plotted at a scale of 1:750.



civic address:
4377 Gordon Drive
Kelowna, B.C.

LEGEND

All distances are in metres.

- iron post found
- iron post set
- ⊙ control monument found
- SL strata lot
- PT part
- C common property
- ① limited common property for strata lot circled.

Grid bearings are derived from observations between geodetic control monuments 95H1822 and 95H1854.

Integrated survey area No. 4 - City of Kelowna NAD83 (CSRS) V 4.0.0.BC.1.

The UTM coordinates and estimated horizontal positional accuracy achieved are derived from the MASCOT published coordinates and standard deviations for geodetic control monuments 95H1822 and 95H1854.

This plan shows horizontal ground-level distances unless otherwise specified. To compute grid distances, multiply ground-level distances by the combined factor of 0.9999372 which has been derived from geodetic control monument 95H1822.

The buildings included in this strata plan have been previously occupied.

The buildings shown hereon are within the external boundaries of the land that is the subject of this strata plan.

This plan lies within the Regional District of Central Okanagan and the City of Kelowna.

The field survey represented by this plan was completed on the 20th day of June, 2016.
Douglas A. Goddard, BCLS 588.

file 16241 fb 367,369,386

OCM 95H1854
DATUM NAD83(CSRS)(V 4.0.0.BC.1)
UTM ZONE 11 NORTH
UTM NORTHING 5522005.704
UTM EASTING 320752.854
POINT COMBINED FACTOR 0.9999418
ESTIMATED HORIZONTAL
POSITIONAL ACCURACY
0.02 METRES

OCM 95H1822
DATUM NAD83(CSRS)(V 4.0.0.BC.1)
UTM ZONE 11 NORTH
UTM NORTHING 5521910.778
UTM EASTING 321396.352
POINT COMBINED FACTOR 0.9999372
ESTIMATED HORIZONTAL
POSITIONAL ACCURACY
0.02 METRES

D.A. Goddard Land Surveying Inc.
103-1358 ST. PAUL STREET KELOWNA PHONE 250-763-3733